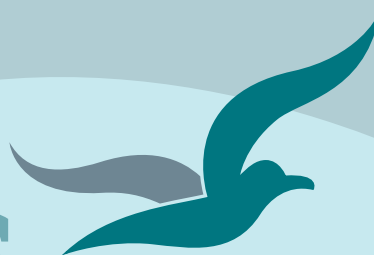


# Bream Bay News



Est.1967 | Locally owned and operated | Delivered FREE twice a month 4 September 2025

## Affordable Quality

- \* SECURITY DOORS
- \* INSECT SCREENS
- \* SHOWER DOORS
- \* BLINDS
- \* AWNINGS
- \* WARDROBE SYSTEMS

[www.homeplus.co.nz](http://www.homeplus.co.nz)



34 Albert St  
Whangārei

Est. 1977

PH: 438 9452

[whangarei@homeplus.co.nz](mailto:whangarei@homeplus.co.nz)

## Former Head Hunter boss operating a rehabilitation programme in Takahiwai

A programme entitled *Gateway to Recovery* is being run in Takahiwai at the same property, which was subject to a Police raid back in 2021 in connection with the manufacture, importation and distribution of methamphetamine by members of the Head Hunters and Mongrel Mob gangs.

The owner of this property Herbert Rata was sentenced to a 12-month home detention for his involvement in this operation in August of 2024. Some of the other members of this drug ring were given lengthy prison sentences but Justice Christian Whata said Mr. Rata had undergone a most “extraordinary rehabilitation” and gave him credit for his establishment of the programme and the support this gave to other men.

A facebook site about the Gateway to Recovery programme shows photographs and short videos of participants preparing to take part in “fight nights”, working on a building project, perhaps on one of the cabins which house some of the participants, out on fishing and diving trips, running races.

Asked about the fight training Mr. Rata said it took a lot of discipline training to prepare for a fight

He said his late mother had visited him while he was in prison on remand and told him to “take another look at life.”

*Continued on page 5*

## Special Person day at Ruakākā Primary School



Ruakākā School held a Special Persons' Day last week on Thursday 28 August. Children were able to invite a Special Person to a mihi whakatau (welcome), morning tea and then into the classrooms to join in on a range of activities such as making paper flowers, reading story books or making Happy Special Person Day cards. Above six-year-old Eva Crego Bourne reads from a picture book to her Special Person mum

*More Special Person photos on page 13*



## Langs Beach 15 Lang Rd

751 sqm 5 2 3 1 1 1

Asking Price \$2,100,000

Christine Birss 027 235 4323 [christine.birss@bayleys.co.nz](mailto:christine.birss@bayleys.co.nz)

MACKYS REAL ESTATE LTD, BAYLEYS, LICENSED UNDER THE REA ACT 2008

### Privately located, yet so close to the beach !!

If space for a large or extended family is an important factor in your search for the perfect beach house, then this property will tick all the boxes. Located within easy walk of the sand this 5 bedroom (plus a study) beach house offers plenty. Built for a multi-generational family it offers easy relaxed living, with spaces for all to relax or socialise.

Constructed in colour steel and plenty of decking the property has a real beachy look about it and has good outdoor flow to those sunny private decks.

Summer is coming. Contact Christine today to arrange to visit soon

[bayleys.co.nz/1154106](http://bayleys.co.nz/1154106)

BAYLEYS



# STOLWERK

## Tick✓Rick

### Candidate NRC Coastal South

Authorised by: R Stolwerk, 22 Lang Road, WAIPU

#### What is TICK RICK up to this week?

Following a visit to the Mangawhai Tavern and School Markets last Saturday I held another DROP IN session at the Mangawhai Village Hall, followed by:

- MONDAY September 1st
  - 5.30-7.30pm - Meet the Candidate evening at the Mangawhai Club
  - 12.00 - 2.00pm - Dune Restoration Planting at Waipu Cove
- TUESDAY September 2nd
  - 10.30am - Civil Defence Emergency Management Group <https://northland.infocouncil.biz/>
  - 1.30pm - Meeting of NRC Investment Committee agenda at the above link
  - 6.00pm - Waipu Cove Reserve Board AGM
- WEDNESDAY September 3rd
  - 2.00pm DROP IN @Waiotira Hall
  - 5.00pm DROP IN @ Marsden Yacht Club
- THURSDAY September 4th -
  - 10.00am Visit to Saorsa Village
  - 11.30am Visit to Bream Bay Village
  - 3.00pm DROP IN @Mangapai Hall
- FRIDAY September 5th -
  - 2.00pm DROP IN @ Waipu Coronation Hall

Nga mihi  
Rick

TRACTOR MULCHING | PILE DRIVING | RETAINING WALLS  
DRILLING | ROADING EARTHWORKS | DEWATERING | DRAINAGE



**HOPPER CONSTRUCTION**

EMAIL: [GUY@HOPPERCONSTRUCTION.CO.NZ](mailto:GUY@HOPPERCONSTRUCTION.CO.NZ)  
PHONE: BOWEN 027 446 3119

## THE BREAM BAY NEWS

is published by Bream Bay News Ltd. Address : RD 2, Waipu  
Phone: 027 432 0070

E-mail: [breambaynews@xtra.co.nz](mailto:breambaynews@xtra.co.nz)

Website: [www.breambaynews.co.nz](http://www.breambaynews.co.nz)

Editor - Marilyn Cox.

Accounts - Susan McRae.

Technical assistance - Geoff Spencer

Advertising design and website maintenance - Megan Lea.

Printed by NZME

## EDITORIAL

### Is this a genuine rehabilitation programme or has *Teflon Herbie* escaped retribution once again?

I have been sitting on this story about Herbie Rata's "Gateway to Recovery" programme for a month or so. I don't really want to be instrumental in unraveling something that is doing some desperately needed work helping people to move away from lives of addiction and crime.

Is this a genuine rehabilitation programme?

The truth is I really don't know. It is easy to put up a whole lot of video clips on Facebook to make something look good. During my brief visit a few weeks ago I spoke to one man who it seemed to be working for. On the other hand our community has suffered and still suffers from the presence of methamphetamine. Bream Bay Police tell me many of the family harm incidents we list in Bream Bay News Police Reports are methamphetamine related.

Parents and grandparents have told me about their sons, daughters and grandchildren whom they had fixed so many hopes and dreams on becoming embroiled in the underworld of methamphetamine addiction.

Children are neglected and sometimes harmed when their parents become focused only on getting their supply of this drug. There are grandmothers, at an age when they should be able to put their feet up, now having to take on sole care of their often traumatised young grandchildren because the parents of those kids are lost in this horrible drugged up wasteland.

You can point to the sky Herbie and say its between you any your Atua. Actually it's also between you and this community.

Herbie once said to me that all the biggest criminals don't get locked up. I wondered if he was talking about himself. I have heard people refer to him as *Teflon Herbie* because, although many suspected his involvement in the local drug supply chain, while people around him were charged, convicted and sentenced he remained at large until, that is, the big Police and Customs operation back in November 2021.

Between March 2020 and June 2021, Customs intercepted 15 separate air cargo or mail consignments, with drugs hidden in books, clothing and framed art. Search warrants took place across Northland including at Herbie Rata's Takahiwai address. Twelve people were arrested, including 56-year-old Herbert William Rata.

Seventeen kg of methamphetamine, 5.44kg of MDMA and a kg of pseudoephedrine were seized, with a combined street value of \$8 million.

When facing lengthy prison terms people frequently turn to Christianity.

A big contingent of people turned up to support Herbie at his sentencing. Amongst them Phil Paikaea who was admitted to The Kings Service Order earlier this year for his work in family violence prevention. Phil continues to support Herbie in his transformation. The Gateway to Recovery Programme was already in place and Judge Christian Whata was convinced.

"The ability to group these men and do something positive, it is an extraordinary rehabilitation not just for himself that requires a degree of recognition that perhaps others don't get," Justice Whata said.

Let's hope the judge was correct in this assessment.

Marilyn



**HAMMER HARDWARE**  
It's your local

For all your Household Needs, DIY and Gardening Supplies,  
Fencing Equipment, Plumbing & Electrical Fittings.

**Potato growing comp. See in store for details.**

**OPEN 7 DAYS** Monday - Friday 8:00am - 5:00pm  
Saturday 8:00am - 4:00pm | Sunday 9:00am - 3:00pm  
Public Holidays 9:00am - 3:00pm  
Waipu Hammer Hardware | 35 the Centre, Waipu | 09 432 0292



## Te Kauika o Patuharakeke hosts its first race day



The winners of the women's race Mahuru Hokianga

Te Kauika o Patuharakeke Waka Ama hosted its first ever race day on Saturday 30 August with 20 waka taking to the water of Whangārei Harbour from the launching place at the end of Ralph Trimmer Drive in Marsden Bay.

Teams were divided into four categories: Wahine, Rangitahi, Tane and mixed teams with the Rangatahi and Wahine heading out on the first 10 kilometre race at around 9.30am with a starting siren and water cannons

from a Northport tug.

The first waka returned around an hour later with the team Mahuru Hokianga (Echoes of the Hokian-ga) taking the winning honours followed by Miti-matanga, a club based near Ngunguru.

## Deb Harding at the Waipu election meeting

Deb said she wanted to reach out and extend manakitanga (care and respect) to all the people of Bream Bay.

"My vision is to see all the people living here like you people of Waipu thrive."

"While I support economic growth I think we need to make sure that development doesn't erode what makes Waipu special."

After listening to various candidates to the Bream Bay Ward and the Mayoralty

say they would be voting against the retention of the Whangārei District Council's Māori Ward Deb held her hands to her chest with a wry smile and said she felt "wounded".

She said she had previously stood for election to both the Whangārei District Council and the Northland Regional Council on the general role and had missed out both times.

She said she felt privileged to be a Councillor (she was the highest polling candidate on the Māori ward in the 2022 Local Government elections) and enjoyed being part of the decision making process for the district.

Deb chairs the Patuharakeke Trust Board.



# BIG RED

## TRUCKING

Owner /Operator Duncan Mackay



GENERAL CARTAGE SERVICE

Metal / Topsoil / Sand / Manure / Hay / Silage



WATER

Prompt Delivery And Reliable Service.

Healthboard Approved Drinking Water Carrier.

Call 021 070 8211

### THE NEXT PUBLICATION DATE

of the Bream Bay News will be Thursday 25 Sept

The deadline for all copy is 4pm on

Wednesday 17 September

## "TAUMATA AROWAI"

This is the name of the Government entity responsible for the monitoring of drinking water, wastewater and stormwater standards across NZ.

This year, Whangārei District Council will pay Taumata Arowai \$526,000 just for this monitoring but Council will retain control of how these assets and services will be delivered under the "Local Water Done Well" legislation.

WDC has joined Kaipara and Far North District in the development of a new council controlled organisation that will pool resources across all 3 councils to manage these services.

The hope is for better efficiency and a reduced bureaucratic burden presently loaded upon elected councillors.

One major concern is that Whangārei ratepayers may eventually subsidise our neighbouring councils who have smaller rating populations and inferior infrastructure in need of major upgrades. The bigger concern I see is that this new entity will levy a specific rate for these services and further rating increases or "creep" will likely occur if not properly monitored by council.



# BALDWIN

## For Bream Bay

Facebook:

"Baldwin for Bream Bay"

Authorised by Dave Baldwin:  
baldwinforbreambay@gmail.com

## LETTERS

## In response to Ian Duffield's "informative" letter

Why do we as Rate Payers have to wait for an election to hear how Whangarei District Council is planning to spend our highly exorbitant rate money. What about after we have our newly elected Councillors in office provide editoria once a month in the Bream Bay News, giving us The Rate Payers that pay to keep them an update of their discussions, decisions at Council as not all of us can attend personally?

Sue Forsyth  
Waipu

## LETTERS TO THE EDITOR ARE WELCOME

Email them to:  
[breambaynews@xtra.co.nz](mailto:breambaynews@xtra.co.nz)  
or drop them off at either the  
Waipu or Ruakākā Post and  
Lotto Shops  
PLEASE NOTE THERE WILL  
BE A THREE WEEK JUMP  
UNTIL THE NEXT ISSUE ON  
25 SEPTEMBER.  
DEADLINE IS 17 SEPTEMBER



Volunteers needed  
Saturday and Sunday 9am - 1pm  
And for occasional weekdays  
Donated goods welcome  
Phone 432 1342 for pickups.

## Our ocean, our future: a call for solidarity

Call me a greenie if you like, I don't care. But before you do, consider this. There is one thing that transcends politics. One thing that impacts every single one of us. Whether we choose to accept it or not. And that is, to be healthy ourselves, we need a healthy planet. Specifically a healthy ocean (70% of the planet is ocean, after all). It's not rocket science. We all learnt about the water cycle when we were kids. Rain falls, ice melts, water collects in the ground, the ocean, other low lying places, the sun evaporates the water, it condenses into clouds, clouds grow heavy, rain falls, and so on and so forth...

Water is a necessity for life. If waterways become polluted, the ocean becomes polluted, then, yup you guessed it, we become polluted. The water cycle connects all things. Every single living being on the planet is connected through water. Our own bodies are made up of an average of 60% water.

So why on Earth, why on Ocean, are people still kicking up a fuss about climate change and questioning whether or not it exists? That argument has become null and void. It is a mere blip on the radar. A fatal distraction that diverts from and avoids the most important point: the stone-cold fact that humans are killing the ocean, and with the same brushstroke, we are killing ourselves.

Our innate greed is sending trawler after trawler into an already over-cooked ocean and raping the seafloor for all it's worth. Bottom trawlers use indiscriminate nets, killing all life, be it shellfish, octopus or whale. Nothing survives. It is mass-murder genocide and it's happening right under our noses, right under the water line.

Ocean change is happening.

Who cares if you, living in your relatively stable country (weather and politics wise) deem climate change to be a myth. Who cares if you question it every time the news comes on. Who cares if you laugh about it with your mates over a beer (which just so happens to be 90% water). The simple fact remains that your life – all life – is temporary. None of us are getting out of here alive. You may not live to see the full-blown effects of a dying ocean. But what about those who come after you. And those after that. Do you want a dead ocean to be your legacy?

Living and working in Mozambique for the Marine

Mega fauna Foundation taught me many things. But the most important lesson was simple. We need to realise our connection to the ocean. We need to realise it, learn about it and celebrate it. In my view, Earth should be called Ocean. It is the life-blood of all things. Life crawled out of the ocean and ultimately became human. We cry salty tears. We look to the ocean when we are contemplating. We splash in it as children. As adults. We eat from it. We float in it. Get baptised in it. It calms us. Heals us. Washes and rocks us. Feeds us. Transports us. Helps us breathe.

How in Ocean's name, can we turn away and pretend everything is okay?

I implore you to watch David Attenborough's swansong 'Ocean'. Whether you "believe" in climate change or not, you are connected to the ocean. Your family. Your friends. Your children. Their children... Every single one of us is connected. Listen as David wraps up a lifetime's worth of work with one simple message: the ocean is our future.

We must, each and every one of us, do something. No matter how small. The theory of marginal gains is tried and tested and it works. You may have heard or read the quote from Sir Dave Brailsford, Head of British Cycling, who attributed the team's unprecedented success to the 1 percent theory:

"The whole principle came from the idea that if you broke down everything you could think of that goes into riding a bike, and then improve it by 1 percent, you will get a significant increase when you put them all together."

We just need to be slightly better – 1 percent better – than those who came before us. We need to help our children do the same. Protest against sandminers, pick what you eat carefully, lay down your weed-eaters and let your lawn grow for the birds, the butterflies, the bees and biodiversity. The ocean is our future. So let's all do something. Anything. Please? How can I help our ocean? An easy first step is to sign this petition to protect 30% of Aotearoa's waters by 2030: <https://www.f.org.nz/our-moana-our-future>

Lydia Draper  
Waipu

## Builders of Quality Family Homes



### The Sandler 236sqm

\$639,560 incl gst

Includes: plans, consent, kitchen, appliances, tinted double glazed windows, tiles, carpet, blinds, heatpump.



Wayne Pickerill  
Managing Director

"Hi, I'm Wayne Pickerill, Managing Director and Project Manager for your new Fowler Home. Enjoy quality and all the benefits of dealing with an efficient, low overhead, nationwide company, where I will take a personal interest and be involved through to completion."



**FOWLER  
HOMES**

More designs at [www.fowlerhomes.co.nz](http://www.fowlerhomes.co.nz) or visit our office at 63 Walton St, Whangarei. Phone Wayne Pickerill 438 4840



## Former Head Hunter boss operating a rehabilitation programme

*Continued from Page 1.*

At Mr. Rata's invitation I visited his home, which operates as part of the Gateway programme. I was introduced to a man named Tilli who has been living there for two years. He had been released on bail from Waikeria Prison and is awaiting sentencing for dealing in and possession of methamphetamine. He was referred to the Gateway to Recovery programme by the judge who presided over his hearing.

Tilli said from the time he was in prison and the time he has been living in Takahiwai he has not touched any drugs. He weighed 150 kilos when he came out of prison but has lost many kilos and is feeling fitter and healthier than he has for a long time.

He said his father was a gang member and he had grown up thinking selling and taking methamphetamine was the right thing to do. He is now a team leader looking after a group of six at the Takahiwai recovery centre.

As well as participating in activities organised by Gateway to Recovery he regularly attends programmes run by Safe Man, Safe Family, The Salvation Army drug addiction services.

He hopes one day to go back to his hometown of

Rotorua to work with drug recovery programmes there. He said methamphetamine addiction is a big problem in Rotorua, with many of his friends regular users.

There were 22 participants in the Takahiwai Gateway to Recovery programme including women and some couples with plans to build more accommodation.

Asked how the programme was funded Mr. Rata said most of the participants were on sickness benefits. A man named Sinclair, who runs the programme as a kind of lieutenant, said people pooled their resources "as we did in the old days."

Asked if he was still a member of the Head Hunters gang Mr. Rata said he wasn't sure, as he hasn't been able to talk to any of the members of this gang for some time. One of his bail conditions is that he has no contact with the gang.

"I have to go back and ask them if I am still a member", he said.

In reply to a question about if he had considered the harm he had caused by distributing methamphetamine into the community Mr. Rata pointed skywards indicating this was between him and his Atua.

**CALL SUE TODAY**  
**0204 632 432**

## Candidates record video messages

If you missed the local election meetings candidates in the Whangārei District Council elections have recorded short two minute videos which can be

viewed on line. Go to [www.wdc.govt.nz/candidates](http://www.wdc.govt.nz/candidates) and click on the name of the candidates you wish to hear from.

### THE NEXT PUBLICATION DATE

of the Bream Bay News will be Thursday 25 Sept  
The deadline for all copy is 4pm on  
Wednesday 17 September



*Welcome*  
**Paula Alexander**

### The natural next step: admin to sales

I'm proud to call Waipu home. Selling property in this part of the country comes naturally — I've lived and breathed the lifestyle here my whole life.

I grew up in Waipu Cove, spending my childhood surfing, fishing and enjoying the beach with my family. I currently serve on the Waipu Cove Reserve Board, working to preserve this special place for generations to come.

I'm passionate about this community and always find ways to contribute. Managing the social media and advertising for the recent play *The Last Song* was a real highlight. Raising \$42,000 for Linking Hands was an incredible team effort.

With 16 years working behind the scenes in the real estate industry, I know the business inside and out. The last 6 years I have worked for Harcourts Waipu. Stepping into sales was a natural move. Combined with 15 years in tourism management, I bring strong organisation and a client-focused approach to everything I do.

I keep real estate simple—honest advice, local know-how, and hard work to get the job done. Thinking about buying or selling? Give me a call.

*Paula*  
**Alexander**

**M 021 027 59745**

**P 09 432 4000**

**E [paula.alexander@harcourts.co.nz](mailto:paula.alexander@harcourts.co.nz)**

**Waipu Real Estate Limited Licensed Agent REA ACT 2008**



- Council accountability for rates
- Resilience for rural communities
- Educational youth pathways into employment
- Advocating against sand mining

Vote Simon Schuster— practical leadership for Bream Bay

**Simon Schuster**  
Bream Bay Ward

Authorised by S  
simon.schuster@



**SKIN CANCER DOCTORS**

**Expert skin cancer checks and treatments**

As your skin cancer doctors, it is our mission to save lives by making skin cancer care affordable and accessible to all Northlanders. Our focus is on the early diagnosis and effective treatment of skin cancer in a friendly and welcoming environment.

09 438 2188 | [admin@skincancerdoctors.co.nz](mailto:admin@skincancerdoctors.co.nz) | 11A Norfolk Street, Whangarei  
[www.skincancerdoctors.co.nz](http://www.skincancerdoctors.co.nz)



As seen on Grand Designs 2019

**COASTAL CONSTRUCTION PROJECTS**

**0274 320 007**

REGISTERED MASTER BUILDER    QUALIFIED TRADESMAN CARPENTERS    [MARCUS@CCP.NZ](mailto:MARCUS@CCP.NZ)    [WWW.CCP.CO.NZ](http://WWW.CCP.CO.NZ)

## Concerns for college students safety at dangerous McCathie Rd. intersection



Vehicles converge from all directions at the McCathie Rd./Port Marsden Highway/One Tree Point Rd. intersection. Bream Bay College Deputy Principal Mark Bayer is concerned for the safety of students who cross here on their way to swim training or to the gymnasium.

Bream Bay College Deputy Principal Mark Bayer is concerned for the safety of the school's students who walk along McCathie Rd. to get to swim training at Tiana's Pool or sessions at a popular gymnasium in the Marsden City complex. There is not even a verge to walk on the right side of the road where pedestrians are supposed to be and the left side, which has some off road space is pretty patchy. Just over a kilometre of footpath runs along One Tree Point road alongside the Marsden City development but this is not continued across the intersection onto McCathie Road towards the college and the Ruakākā Towncentre.

The biggest danger though is getting across the intersection with the 100 kph Port Marsden Highway separating McCathie Rd. to the south and One Tree Point Road to the north.

The school has provided a letter of support to the Bream Bay Shared Path group which has long term plans for an off road link bypassing the McCathie Rd. intersection .

## A new business support group in Ruakākā

A new business support group is taking shape in Ruakākā. An inaugural meeting took place on Thursday afternoon 21 August in the Two Birds Café at the Ruakākā Towncentre. Around 20 business people attended and discussed ways to bring more customers into the towncentre and to generally support Ruakākā business. One concern was that there is no signage on State Highway One letting travellers know of the existence of Ruakākā.

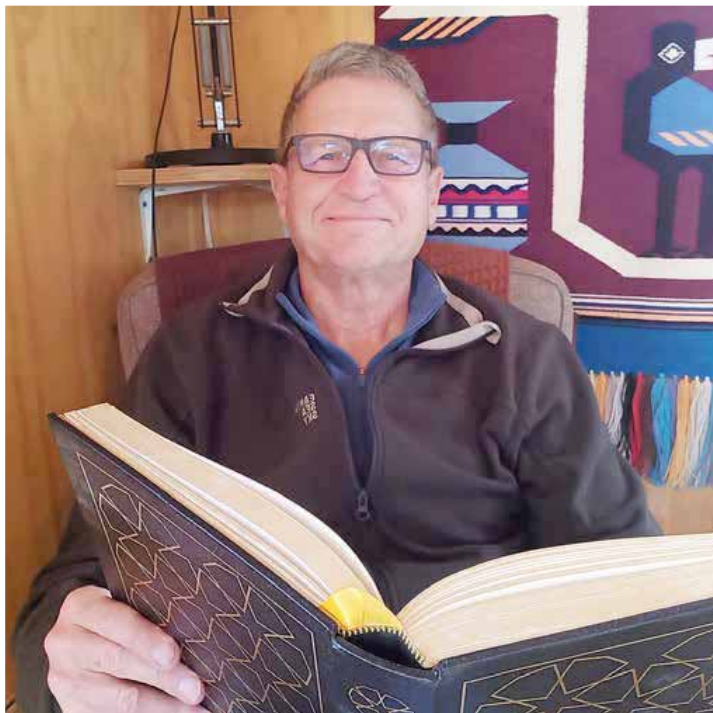
All agreed to hold regular get togethers.

Carl Morley of the Ruakākā Lotto and Post, the instigator of the new support group, invites other Ruakākā business people to call into his shop to register their interest in joining the group.

**MAGIC TYRES**  
**Large selection of used & new tyres**  
**Car & Trailer Rims**  
**Ph. 438 3534      103 Port Rd., Whangarei**



## Expressions of interest invited in a Gentlemen's Book Club



Carey Hablous

Carey Hablous is hoping to start a Gentlemen's Book Club in Waipu. He says, "If you are a gentleman with a love of reading and thoughtful conversation then the club would love to hear from you."

Carey said, "We are seeking expressions of interest from men who would like to meet monthly to share in the discussion of books, both contemporary and classic, any works that inspire, challenge, or simply delight. These could be a newly discovered book or a gem from years past that has never been forgotten."

"If you would enjoy engaging conversation in the company of like-minded readers, the Gentlemen's Book Club would love to hear from you."

Carey got the idea from an interview that Jesse Mulligan did on RNZ.

He liked the idea and thought it might be something applicable to Waipu.

"I imagine there may be a fair few men in our area that find themselves socially isolated if they work from home or have stopped working altogether. Of course there are sports clubs and volunteering like the Menzshed or trapping, but it's a bit limited for more cerebral stimulation."

Asked about why this club is just for men Carey said, "My understanding is that there already are women's book clubs, some more serious and others an excuse for a glass of wine, but not for men. I visualise monthly get together of up to 15 gentlemen and we have a chance to discuss books. It's not so much about excluding women as making a space for men."

For further information or to register your interest, please email:

gentlemensbookclubofwaipu@gmail.com

### THE NEXT PUBLICATION DATE

of the Bream Bay News will be Thursday 25 Sept

The deadline for all copy is 4pm on

Wednesday 17 September

## GENTLE DENTAL RUAKĀKĀ

: 09 432 8139



From left: Deb Dixon - Practice Manager/Dental Assistant, Dr Seena Gopi Dentist/Owner, Candace Smith Dental Assistant, Gerrie Westrupp Hygienist

### Still Here in the Heart of Ruakākā!

Despite the rumours — we're very much still here, proudly serving the Ruakākā community!

We're open five days a week, and our team is growing, with a new dentist joining us next month.

With over 40 years of dedicated oral health care, we're not going anywhere.

- New patients welcome
- Opening hours: Monday to Friday -8.30am to 5pm
- Call us: 09 432 8139
- Email: gentledental19@gmail.com

Local people read **THE BREAM BAY NEWS**  
It is an effective place to advertise

## Common sense, for a change!

*"Insanity is doing the same thing over  
and over and expecting different results"*

- Albert Einstein

# Paul Grace Vote 1

Bream Bay Ward  
WHANGAREI DISTRICT COUNCIL

Authorised by Paul Grace: paulmgraceis@gmail.com



www.paulgrace.co.nz



**Dagny Leggott**

M 021 858 661 P (09) 972 7801  
dagny@fishtofish.co.nz

28 Herekino St, Whangarei 0110

We are in Waipu @ Origin Northland  
EVERY THURSDAY  
8am to 11.30am unless prior sold out

## Inter school cross country competition brings together the best distance runners from six local schools



The starting line up for the 10 and 11 year old boys' race

The best runners from: Maungaturoto, Mangawhai Beach, Kaiwaka, Waipu, Ruakākā and One Tree Point Primary Schools came together for the zone school cross country races held at Maungaturoto School on Wednesday 20 August.

Results  
8-year-old girls: 1st Jessica Hansen – Ruakākā, 2nd Alexis Lawrie – Mangawhai, 3rd Evie Wech – Mangawhai and 4th Annabelle McGee Scott – Mangawhai.  
8-year-old boys: 1st Hunter Jones – Ruakākā, 2nd William Buchener – Ruakākā, 3rd Cody Norris – Mangawhai, 4th Archie Hund – Kaiwaka.

9-year-old girls: 1st Phoebe Hampshire – Maunga-

turoto, 2nd Harper Ferguson – Mangawhai, 3rd Amelia Wheatley – Mangawhai, 4th Elle Jones – Waipu.

9 - year- old boys: 1st Torben Smean-One Tree Point, 2nd Lennix Hurihanganui – Ruakākā, 3rd Harry Gatefield – Waipu Primary, 4th Ryan Hansen – Waipu Primary.

10/11 year old girls: 1st Alva Dane Van Coller – Maungaturoto, 2nd Faith Paul – Mangawhai, 3rd Jasper Holah – Mangawhai, 4th Indie Blaney – Waipu.

10/11 year old boys: 1st Tyler Wright – One Tree Point, 2nd Braxton Williams – One Tree Point, 3rd Noah Sloane – Ruakākā, 4th Julian Cammell – Mangawhai.



Thinking concrete but don't know where to start?

**Think Atlas Concrete**

- We quarry the aggregate
- We manufacture the concrete
- We site visit to advise the best options
- We give you the choice of mix and colours
- We give a choice of local placers for you to choose
- We manufacture concrete to your requirements
- We stand by our product, you stand on it

**Atlas Concrete**

**Your First Call for Concrete**

**Ph: 0800 888303 - Brynderwyn  
or 432 5030 - Ruakaka**

## Bream Bay Garden Maintenance

Landscaping • Planting • Raised Beds  
Decks • Hedges trimmed • Trees pruned  
Weed control • Section Tidy Up  
• Simple Building jobs•

Free Quotes

**NO JOB TOO SMALL**

One Offs, Weekly, Fortnightly or Monthly

**Phone Marcus 021 343 727**



# Vince Cocurullo

**VOTE 1 FOR MAYOR**

**votevince.co.nz**

Approved by Vince Cocurullo, 40 Otaka Rd, Whangarei

## A Real Vision for Whangarei



# The Pipeline

## Ruakākā Wastewater Treatment Plant Update

September 2025

The project to expand the Ruakākā Wastewater Treatment Plant is well underway. In this issue we'll update you on the four key workstreams.

### *Interim solution*

The existing plant is nearing the limits set out in the consent for discharging treated wastewater. Council has been exploring options for adding to the areas available for discharging treated wastewater. This will allow consenting of new connections to restart.

Through May, June, July and August we engaged with key stakeholders including immediate neighbours, agencies who operate in the area, hapū and the local Ruakākā community.

Based on the technical investigation outcomes and feedback from the community we are now preparing the consent application for our preferred option; addition of Zones 6B & 7 to the available discharge areas.



**Zones 6B & 7 - Areas identified for additional discharge capacity**

### *Treatment plant*

The professional services contractor PDP investigated location and technical options. The preferred option at this stage is to locate the new treatment plant at the Rama Road site already owned by Council. The new plant would use a technology known as Multi-stage Biological Nutrient Removal (BNR) reactor and Membrane Tanks which uses a lot less space than the existing treatment plant and processes the wastewater much faster and to a much higher end-quality.



**An example of a reed bed for biosolids treatment**

The new treatment plant is also planned to include a reed bed facility which will convert the waste sludge from the treatment plant into a compost like material (biosolids) suitable for beneficial reuse (e.g. horticulture or forestry).

### *Ocean outfall*

Contractors, Aecom have completed a range of investigations to recheck the findings that informed the original consent from 2012.

The investigations confirmed that there are no obstacles to proceeding with ocean outfall as consented. Based on this evaluation work the location has been confirmed and the preferred design is being finalised.

### *Alternative discharge*

The project team and its design partner WSP are working on alternative discharge options to the ocean outfall. Their investigations include evaluating possible locations, ecology, hydrogeology and construction options. More detailed investigation into the shortlisted options are now underway. One of the potential options is working with Channel Infrastructure. Options include areas of land owned by Council with discharge into either the Ruakākā River or to the refinery area via an existing pipeline for harbour discharge or future re-use options. A preferred option will likely be identified over the next few months.

### *Land contact*

Both the ocean outfall and alternative discharge options include a land contact facility which passes the treated wastewater over and/or through natural materials such as rocks, vegetation, and cascades to mimic a natural process and reinvigorate the health of the water. This process restores the Mauri of the water before it is returned to the environment.



**Land contact system concept**

## John Hunt for NRC Coastal South



Hi I'm John Hunt and I'm standing as a candidate for Coastal South on the Northland Regional Council.

Working for the community is what I do. My community experience includes 15 years as CEO of Harbour Basketball, NZ's top basketball association, active involvement in the environmental protection of Bream Tail and as treasurer of the Waipu Tennis Club for the past four years.

Public bodies should always be responsible with other people's money. I will bring sound money management skills to the Council, enthusiasm, and a strong commitment to protecting our environment.

The NRC is addicted to spending and is fueling that addiction with our rates. In 2016 NRC rates totaled \$20 million. Nine years later in 2025 they hit \$55 million. Their staffing levels increased by 15 percent in 2024 during a recession. They now have 345 staff members earning an average of \$87,000 per person. They also have a large number of consultants doing work for them. Why do they need consultants if they have so many staff?

The NRC needs to spend our money effectively and must live within its means. I am proposing a three year NRC rates freeze and a hiring freeze.

I will also fight to have outstanding local community groups like the Manga-whai Harbour Restoration Society, the Piroa Conservation Trust, the Manga-whai Trackies, Bream Bay Coastal Care and the Wairahi Tracks Charitable Trust receive reprioritized funding from the NRC. These organisations are highly effective and deserve our support.

The Bream Bay ecosystem is one of the most extraordinary in the world and needs to be protected for future generations. We owe this to our children.

That's why I am asking for your support. I am asking for one tick of your time so I can give you three years of mine.

## New Committee for a Bream Bay aquatic centre

In late 2023, Mary Sinclair and Tania Costello from Mohr fitness in Waipu conducted a survey to understand what level of support there would be for a community pool. The original plan was for a heated swimming pool alongside the SHrED gymnasium in South Rd., owned by Tania and her husband Gilbert.

Feedback from over 1,000 people was strongly in favour of such a facility in Bream Bay. Respondents said the area is fast growing and with over 20 kilometres of coastline, water safety is a major concern. They also listed the health and wellbeing benefits of aquatic fitness.

A Bream Bay Aquatic Committee has been formed, focused on the potential development of an aquatic facility for the Bream Bay community. Along with Mary and Tania, the Committee now includes Steph Gordon, Andy Dalton, David Lewis (all from Waipu), and Sandra Gillooly and Denise Jensen (both from One Tree Point). After an approach by this group the Whangārei District Council and Sport Northland have commissioned a feasibility study by the Sport and Leisure consultancy firm RSL.

A number of local community organisations have been sent questionnaires by RSL asking: "If improved aquatic facilities were provided in Bream Bay. What type of facilities would you use, how often and how many people would this involve?"

"Which location do you think is most suitable for an aquatics facility to serve the Bream Bay area?"

RSL has also placed a notice in this issue of the Bream Bay News see below left.

## Bridge club donates to the Waipu Menzshed



Before the Bream Bay Bridge Club members began their Tuesday night play on 26 August, they presented a cheque for \$1,800 to the Waipu MenzShed.

Each year the Club runs a charity Tartan Tournament and the proceeds go to a local entity. This year the club chose the MenzShed to help with the build of a new premises. Pictured is the Bream Bay Bridge Club President Kim Thomas presenting the cheque to the MenzShed Chairman Gordon Walker, together with Edwn Smith, the Menzshed Donations Co-ordinator.



## Waipu Presbyterian Parish

~ Working with you - for your Community ~

### Sunday Services

27 Camellia Ave, Ruakaka - 8:45am

50 The Centre, Waipu - 10:15 am

Office Phone: 09 432 0534

Email: waipupresby@outlook.com

Search for us on Facebook and YouTube

## Aquatic facility for Bream Bay being explored for feasibility

Whangārei District Council and Sport Northland are working with the Bream Bay Aquatic Committee on a feasibility study focused on understanding the demand and potential site options for an aquatic facility in Bream Bay in the future.

While no funding has been identified for a facility of this nature, the study comes after 'Kōkiri ai Te Waka Hourua', a strategy for play, active, recreation and sport in Northland, identified shortfalls in aquatics provision across the region in 2021.

Sport Northland Spaces and Places Manager, Stu Middleton, said the strategy found a need for a 'regional aquatics facilities plan' to provide a pathway towards improved provision across the region, and that this plan was developed in 2023.

"Investigating the feasibility for new aquatic facilities in Whangārei is the first step in the roadmap, and we are starting in Bream Bay where there is already significant support among members of the community.

"Once we have an understanding of what's possible, the next stage would be to identify funding sources and develop a series of detailed options for consultation with the community," said Mr Middleton.



# *Brad Flower For Mayor*

## *Proven Leadership*

- ✓ Creating a place we're proud to call home
- ✓ Supporting our seniors and our young people
- ✓ Careful financial planning to manage rates rises

**1**

**MAYOR**

**1**

**URBAN GENERAL WARD**



**BREAM BAY STORAGE**

INSIDE/OUTSIDE storage at 50 Cove Rd., Waipu

**Free phone. 0800 432 135**  
**enquiry@breambaystorage.co.nz**

[www.breambaystorage.co.nz](http://www.breambaystorage.co.nz)

**RUAKAKA SAFE STORAGE**

99 MARSDEN PT ROAD, RUAKAKA

92 Units from 6 x 3 to 1 x 1  
 Each unit individually alarmed and monitored  
 Electrified security fence

**Ph. 0508 273 262 or 0275 310 788**

CLEAN - DRY - SECURE

### THE NEXT PUBLICATION DATE

of the Bream Bay News will be Thursday 25 Sept  
 The deadline for all copy is 4pm on  
 Wednesday 17 September

## Sand mining company now focused on its application to dredge in Bream Bay

McCallum Brothers Ltd. has said it will now focus its attention on its proposal to dredge more than eight million cubic metres of sand from Bream Bay after last week abandoning its legal challenge to the Environment Court to continue its sand extraction operation in Pakiri.

Auckland Council refused to renew McCallum Bros' resource consent application in 2022, citing unacceptable environmental impacts but the company has continued to operate its dredge there while it pursued various legal challenges.

The company is expected to file its application to sand mine in Bream Bay under Fast Track legislation within the next few weeks.

The company is expected to file its application to sand mine in Bream Bay under Fast Track legislation within the next few weeks.

## Where do our local government election candidates stand on climate change?

Candidates in both the Whangārei District Council and Northland Regional Council elections have been invited to a series of public meeting by Climate Action: Tai Tokerau where they will be asked to state their positions on: climate action, renewable energy, biodiversity and Māori representation. The Bream Bay meeting will be

held on Thursday 11 September from 7-9pm in the Ruakākā Recreation Centre in Peter Snell Rd.

The climate action group is also surveying candidates on these issues with responses posted on the website [northlandclimatechange.org/advocacy](http://northlandclimatechange.org/advocacy).

## Local Government Election voting papers will be sent out next week

Voting papers for the 2025 Local Government Elections will be sent out from Tuesday 9 September and need to be returned by Saturday 11 October.

This year the Whangārei District Council is using a Single Transferable Vote system where you number candidates 1-6 or 1-5 in order of your preference.

The Northland Regional Council retains the First Past the Post system so you just put a tick beside the name of your favoured candidate.

Preliminary results will be announced on Saturday October 11.

**Ken COUPER**  
 for **MAYOR**

**KEN'S THE**

**1**

Authorised by Ken Couper  
[kencouper.co.nz](http://kencouper.co.nz)



## Special Persons at Ruakākā School



Isabelle Hobson who is almost eight years old making a Happy Special Person Day card for her grandfather Bain McGregor Bream Bays renowned piper



Chloe Slagter, aged 11, with her mum Sarah Slagter



Kendall Ford, aged 6, with her Nan, Jenny Ford.



Mabon Ross makes paper flowers with his Dad Jarred Ross



Brelle Kenobi, aged 7, with her Grandma Sue Wright..



12-year- old Tanya Patel with her Mum Roshi Patel



## Ruakākā Lotto, Post & Gift Shop

### Ruakākā Town Centre

Shop local for all your needs:

Stationery, Toys, Magazines,  
Greeting Cards & Gifts, Prezzy Cards  
Printing & Drycleaning services



Phone  
**09 988 9370**

**Open Wednesday & Saturday until 6pm.**



**09 988 9049**

whittakersfunerals.co.nz | admin@whittakersfunerals.co.nz  
25 Kapa Road Ruakaka 0171 | PO Box 241 Ruakaka 0151



**NEED  
STORAGE ON  
YOUR SITE?**

- 20ft CONTAINERS
- \$180/MONTH +GST +DELIVERY
- Short-term or long-term hire (3 month minimum)

- ✓ Ideal for Tradies, farms & worksites
- ✓ Delivered to your door
- ✓ Secure & watertight

**CONTACT US**

Ph 021 272 2739 / 021 432 701  
Email: storagebreambay@gmail.com  
www.storagebreambay.co.nz



## THE NEXT PUBLICATION DATE

of the Bream Bay News will be Thursday 25 Sept  
The deadline for all copy is 4pm on  
Wednesday 17 September

## Tickets now on sale for Waipu Art in Motion

Tickets have gone on sale for the Waipu Art in Motion (WAM) Wearable Art and short video show, which will be held in the Waipu Coronation Hall on October 31 at 7pm as well as on 1 November at 2pm and 7pm.

Sue Welford, of the organising committee, said there are a "good number of entries" which are divided equally over the five categories, which are: Flash Trash, Crazy about Culture, Legends of Land and Sea, Fabulous Flora and Fauna and Climate Catastrophe.

Entrants include Maggie Wistrand who created for the show and Sandra Guest who won the first ever Art'nTartan award with her entry Gathering of the Clans.

Debi Waters Brown has taken on the role of leading artistic director. Designers need to complete their entries for a preview later this month. The designs will be matched with music and lights and in between the category presentations there will be performances by local entertainers.

Tickets cost \$45 and are available from [www.trybooking.com/nz](http://www.trybooking.com/nz)

The show is a fundraiser for NEST The Northland Emergency Services Trust, which operates the Rescue Helicopter.



Maggie Wistrand's Honky Tonk Girl entry in the 2022 Waipu Art'n Tartan awards

## No shortage of candidates for school board elections

While schools around New Zealand were a few weeks ago reported to be struggling to find enough candidates for the tri-annual Board of Trustee parent elections in Bream Bay enough people have put their names forward to ensure elections at all four of our local schools.

There are ten candidates for six places on the Bream Bay College Board. They are: Bronson Aperahama, Mackenzie Ashby, Sarah Ashby, Aaron Bird, Porscha Brown, Jules Dewhurst, Shaun Grieve, Hailee Heta, Pat Inglis and Benjamin Marsh.

Ruakākā Primary has eight candidates: Matthew Yovich, Cherith McLennan, Shaun Grieve, Anna Wetere, Laura Chapman, John Westlake, Daisy Sieve-wright and Jade George for five vacancies.

One Tree Point School also has eight candidates for five parent representative places on its board. One

Tree Point School board candidates are: Kerri Gibson, Shana Hopper-McCully, Daniel Massey, Michael O'Dell, Lucina Kau Kau, Bronson Aperahama, Benjamin Marsh and Katrina Kendall.

Waipu Primary has six nominations for three vacancies on its board. They are: Chris Townshend, Dion Egan, Hayley Mrsich, Jon Proffitt, Rachel Fowler and Stephen Abercrombie. Waipu Primary has a staggered (mid-term) election cycle. This enables a board to have half of its parent representatives elected in a triennial election year and the remainder at a mid-term election. Mid-term elections are held approximately 18 months after triennial elections. The three successful candidates in the Waipu board election will join Amos Cook and Dave Field who were elected in the previous mid term cycle.

Voting in school board elections is well underway and

## Beats by Bingo for a One Tree Point school bike track

A fundraising effort has begun to build a bike track at One Tree Point School

Serena Leonard of the school's PTA said, "One Tree Point is the only school in Bream Bay without a bike track so we are putting on a Beat by Bingo fundraising event." On Sunday 19 October from 7pm in the school hall.

For the uninitiated, this is a game played with cards, which have musical artist names in the squares that will correspond to music played by a DJ. You win by knowing your music and covering five squares in a row.

Serena said, "It's a lot of fun "and this year we are getting fancy"

"People always say there are not many opportunities to

dress up in Bream Bay" so bingo players are invited to wear cocktail attire (or their Sunday best!), masks, and the food will be more gourmet.

Cocktails will be served and there will be a fully stocked bar.

Tickets cost \$59, which will give you a welcome drink, grazing platters, five rounds of Beats by Bingo and a chance to win prizes. There will be an auction and dancing.

Tickets can be purchased individually or you can buy a half table – 6 or a full table of 12.

They are available from the school office or at [www.eventbrite.co.nz/e/1633089748399](http://www.eventbrite.co.nz/e/1633089748399)



## Whangārei Adventist school adopts a Uretiti beach entrance

Children from the Whangārei Adventist Christian School have taken over the care and maintenance of a pedestrian beach access through the dunes at Uretiti.

On Wednesday 20 August Northland Regional Council staff fenced a popular track to the beach just outside the southern boundary of the Uretiti campground. Then thirty children aged from 5 to 13 years from the Adventist school along with parents and teachers got to work planting 15 trays – 1,460 pīngao



Twelve-year-old friends Daniella Wharerau and Kyra-Jean Clarke work together to help repair the damaged dune with spinifex and pīngao.

and spinifex plants on the damaged dunes on either side. Some of the senior students will be returning early next month to do some more planting.

The track is used both by campers and day visitors to the beach.



**Vote Fiona Green  
= Mayor**

**Fionagreen.net**

### THE NEXT PUBLICATION DATE

of the Bream Bay News will be Thursday 25 Sept

The deadline for all copy is 4pm on

Wednesday 17 September

## Time for a change? Talk to James.

When it comes to getting results, experience matters—and so does strategy. Team James Alexander leads with precision, passion, and a proven track record.

Every property has a story - we make sure it's heard. Our dynamic and comprehensive marketing campaign ensures your property reaches buyers with impact. Backed by Ray White we are your local force with international reach.

- 28 years combined experience in the Real Estate industry
- Ray White Elite Performer - Four years in a row
- Top 3% performer in Ray White Internationally
- Salesperson of the Year - Ray White Bream Bay - Four years in a row
- Community Award - Ray White New Zealand 2024
- Community Award - Ray White Bream Bay 2025

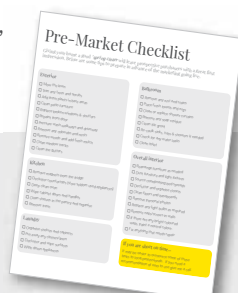
With seven weeks until peak selling season begins, timing is everything.

Get ahead of the game - your campaign will be primed, polished, and positioned to perform as the standout choice while others are still preparing. Let's talk today.

*Experience and results go hand in hand.*



SCAN HERE  
to access the Pre-Market Checklist



RayWhite

TEAM JAMES ALEXANDER

021 878 178

**We bring the whole team**

James Alexander | Licensee Salesperson | The Real Estate Shop Limited, Licensed (REAA 2008)

## BREAM BAY link

THIS SERVICE RUNS ON THURSDAYS  
EFFECTIVE 1<sup>ST</sup> AUGUST 2025

### Bream Bay - Whangārei

Bream Bay to Whangārei (Morning - AM)	
THURSDAY ONLY	
Depart Kaiwaka (Bus stop below St Paul's Church)	9:00
Mangawhai Village (Village Shops Bus Stop Outside Bennetts)	9:15
Mangawhai Heads (The Club)	9:20
Langs Beach (Corner of Wairahi and Cove Roads)	9:35
Waipu Cove (Opposite Beach Car park)	9:40
Waipu (Vet Centre Bus Stop)	9:50
Ruakākā (Peter Snell Road - opposite Takutai Place)	10:10
Arrive Whangārei (Rose Street Bus Terminus)	10:50

**THESE ARE APPROXIMATE  
TIMES AND WE SUGGEST  
ARRIVING 5 MINUTES PRIOR  
TO ADVERTISED TIMES**

**ROUTE DESCRIPTION**

Kaiwaka/Mangawhai Road, Molesworth Road, Mangawhai Heads Road, Cove Road, The Centre Waipu, Nova Scotia Drive, SH1, Marsden Point Road, Peter Snell Road, Marsden Point Road, SH15A, SH1, Otaka Road, Mauru Road, Walton Street, Rose Street Bus Terminal.

**ALTERNATE STOPS**

If you would like to be picked up elsewhere along the route, please phone Leabourn's to arrange this on the Wednesday before you want to travel.

Bream Bay Link is operated with support from Northland Regional Council, NZTA and Leabourn to help Northland grow.

Whangārei to Bream Bay (Afternoon - PM)	
THURSDAY ONLY	
Depart Whangārei (Rose Street Bus Terminus)	3:00
Ruakākā (Peter Snell Road - opposite Takutai Place)	3:40
Waipu (Vet Centre Bus Stop)	4:00
Waipu Cove (Opposite Beach Car park)	4:10
Langs Beach (Corner of Wairahi and Cove Roads)	4:15
Mangawhai Heads (The Club)	4:30
Mangawhai Village (Village Shops Bus Stop Opposite Bennetts)	4:35
Arrive Kaiwaka (Bus stop below St Paul's Church)	4:50

Fares	ONE WAY	RETURN
Kaiwaka	\$7.50	\$11.00
Mangawhai	\$7.50	\$11.00
Mangawhai Heads	\$7.50	\$11.00
Langs Beach	\$7.50	\$11.00
Waipu Cove	\$6.50	\$9.00
Waipu	\$6.50	\$9.00
Ruakākā	\$5.50	\$8.00

**LEABOURN**

P 0800 994 404  
E office@leabourn.co.nz

**TRANSPORT AGENCY** **Northland REGIONAL COUNCIL**

**SERVICE INFO** [www.buslink.co.nz](http://www.buslink.co.nz)

## Waipu Tennis Report

By Paul Ramsay

It's not often you get offered a free day out for all ages but Waipu Tennis are offering this on Sunday 7 September with the National Love Tennis promotion day. Bring your family to our courts in the Caledonian Park between 10am and 2pm for lots of free tennis based activities, free food, giveaways and the opportunity to join the club on the day for a 20% discount. Everything you need will be available including racquets and balls.

Believe it or not it is time for our summer tennis activities to get under way. Throughout September on a Tuesday at 6pm we will be running a come and try evening. Adults are invited to attend these social nights and we will support you into playing this great game and maybe help extend your life! It has been proven that tennis players live 9.7 years longer than others. Badminton is next at 3.2 years. Come and join the 20 or so members who have played through the winter.

After these nights' players will be put in graded teams up until Christmas for our pre-Christmas competition. This competition will start in early October. Make sure you let Sean and Jeff know you are keen to play particularly if you are a returning member.

Juniors and Intermediates will start in Term 4 on Tuesday afternoons from 3.30pm. Contact Hayley Pyle (0210593438) if you are keen.

The club AGM was held on Sunday 24 August and was well attended. While President, Secretary and Treasurer remained the same it was great to see some new faces on the committee to guide us into the future. Subscriptions have remained the same bar one reduction. That reduction is for all school age players. Your sub will be \$80. Not bad for about 20 weeks of professional coaching.

New to the area or already here and want to play Interclub this season contact James Donaldson (0276014559) or Sean McCombe (02108895693) as soon as possible. Interclub is played on Monday nights at 6pm both here and in Whangārei so you must be available most weeks at this time.

Exciting news for tennis in Northland is coming up in 2027. The Tennis New Zealand Masters Teams event will take place over Easter. This is a massive tournament with 70-90 teams of 4-5 taking part in various age groups. Over 40 courts will be needed and Waipu may be one of the venues. Want to know more or take part talk to Paul Ramsay.

Remember to check our Facebook page for what is going on at the club and who put their hands up to help out on the committee.

## Love being active?

24/7 gym

3 Peter Snell Road  
Ruakākā  
Ph: 432 7962

Opening hours:  
Mon, Tues, Wed, Fri  
8am to 2pm  
Thur 8am to 6pm

Very reasonable rates

no lock in contract,  
no admin, no joining fee  
\$10 per week  
Ladies only gym  
Unisex gym  
Casual gym \$2 per day  
(Access during opening hours)

Come and join us at the  
**Ruakākā Recreation Centre**

Lounge/Hall available for hire  
Meeting room for hire - up to 15 people  
For events kitchen facility available  
Treatment room for hire

Activities at the Ruakākā Recreation Centre					
Activity	Day and Time	Location	Cost	Contact	
Zumba	Monday 8.45am to 9.45am	new centre	\$10	Ali 021592228	
Pacific Culture Group	Monday 4pm to 6pm	new centre		Finemoka mokafutu@gmail.com	
Fit for life Ruakākā class	Monday 10am to 11am	new centre	\$5	AnnMarie 0211693115	
Music club	1st Monday of month 7pm to 10pm	new centre	\$5	Fulco 0274718428	
Yoga	Tuesday 9 am to 10.15 am	old centre	\$15 or 10 for \$130	Nicola 021 177 5461	
Zumba Gold	Tuesday 9 am to 10 am	new centre	\$9	Roz rozhzumba@gmail.com	
Fit for life Ruakākā class	Wednesday 11am to 12pm	new centre	\$5	AnnMarie 0211693115	
petanque or indoor bowling	Wednesday 1pm to 4pm	new centre		Sue 021850286	
North Stars Gym Sports	Wednesday 1.30pm to 5.45pm	old centre		Fran 021 708 158	
Zumba	Wednesday 5.45pm to 6.45pm	new centre	\$10	Ali 021592228	
Zumba Gold	Thursday 9am to 10am	new centre	\$9	Roz rozhzumba@gmail.com	
Stretching classes	Thursdays 11am to 12pm	new centre	\$5	Lu 0226541979	
Bream Bay United Soccer Club	Thursday 3.30pm to 6pm	old centre		Ken 021 361 375	
Sit Fit	Friday 10.15am to 11.15am	old centre	\$6	Christine 027 573 6346	
Parent Group w.babys under 2	Friday 11.30am to 1.30pm	old centre		Kiri 021 252 9981	
Zumba	4th Friday of month 4.45pm-5.45pm	new centre	\$10	Ali 021592228	
Zumba	all other Fridays 9.15am - 10.15am	new centre	\$10	Ali 021592228	
60's up	4th Friday of month 10am to 4pm	new centre	\$12 annually fee	Joy 021491887	
Casual gym	Mon to Fri 8am to 2pm, Thur to 6pm	new centre	\$2	RRC 4327962	
Unisex & Ladies gym	24/7 gym	new centre	\$10 per week	RRC 4327962	
New centre address	3 Peter Snell Road Ruakākā	Old centre address		9 Takutai Place Ruakākā	

We are also home to Bream Bay Squash club and Bream Bay United Association Football club - old centre

## MEET THE CANDIDATES

Northland Regional & Whangārei District Councils



## WHO TICKS YOUR BOXES?

☒ Climate Action

☒ Renewable Energy

☒ Māori Representation

☒ Biodiversity

Scan the QR code below for the results of our candidate survey  
<https://northlandclimatechange.org/advocacy>

Monday 1 September  
**MANGAKAHIA**  
7pm - 9pm

Mangakahia Sports Complex  
689 Mangakahia Road

Saturday 6 September  
**WHANGĀREI**  
2pm - 4pm

One One Six  
116 Bank Street

Thursday 11 September  
**RUAKAKA**  
7pm - 9pm

Ruakākā Recreation Centre  
3 Peter Snell Road

Saturday 13 September  
**NGUNGURU**  
9:30am - 11:30am

Ngunguru Memorial Hall  
1879 Ngunguru Road

Monday 15 September  
**MĀORI WARDS**  
ONLINE HUI - 7pm

SIGN UP  
HERE




Let's ensure  
these important kaupapa  
are at the front of election  
conversations and find out  
which candidates are most  
likely to support them





## WHAT'S ON IN BREAM BAY

- **RUAKAKA RACES** Next on Wednesday 3 September.. Gates open 11am. Lion Red Pubs and Clubs Punters Challenge.
- **WHANGAREI CHORAL SOCIETY** singing Folk Songs To be followed by Afternoon Tea. Sunday 21 September, 2.00pm. St. Peter's Anglican Church, Nova Scotia Drive, Waipu. Door sales only. FOTO members \$5; Adults \$10; Children (13 and under) free. All proceeds to the organ fund.
- **WAIPU PRIMARY CALF CLUB** Saturday 18 October 9am - 2pm . Fund family day. All welcome
- **WAIPU ART IN MOTION (WAM)** Wearable Art and short video show, which will be held in the Waipu Coronation Hall on October 31 at 7pm as well as on 1 November at 2pm and 7pm. Tickets cost \$45 and are available from [www.trybooking.com/nz](http://www.trybooking.com/nz). The show is a fundraiser for NEST The Northland Emergency Services Trust, which operates the Rescue Helicopter.
- **BREAM BAY MUSIC GROUP** First Monday of every month starting at 7pm At the new Rec Centre in Peter Snell Road, Ruakaka. Contact Ross or Fulco on 0274 410 584
- **COMMUNITY CONNECTIONS** Fridays 10.30 -12noon, Bream Bay Community Trust Hall, Takutai Place, Ruakākā coming up: .
- **COMMUNITY BINGO** every last Wednesday each month (except December) Every one welcome. Raffles, restaurant and Bar open from 5 pm. Calling starts at 7pm 15 games and 2 jackpots open to the public. At the Waipu Citizens and Services Club
- **WAIPU MUSEUM** 36, The Centre, Waipu. Open seven days 10am- 4pm
- **THE KAURI MUSEUM.** . The Kauri Museum is open 9am-5pm every day



### BREAM BAY CONNECT


**MONTHLY DROP IN SESSIONS**

Come have a cuppa with us and explore our services

We have: Social Workers/Family Support/Youth Mentors/Counsellor/Art Therapist

*Ask us anything...*

<b>1st</b> <b>THURSDAY</b> <small>OF THE MONTH</small>	<b>MANGAPAI HALL</b> 2 McAlister Road, Mangapai Starting 7 <sup>th</sup> August 2025 <b>11AM-1PM</b>
<b>2nd</b> <b>THURSDAY</b> <small>OF THE MONTH</small>	<b>TAIPUHA HALL</b> 171 Taipuha Station Road, Taipuha Starting 14 <sup>th</sup> August 2025 <b>11AM-1PM</b>
<b>3rd</b> <b>THURSDAY</b> <small>OF THE MONTH</small>	<b>WAIOTIRA VILLAGE HALL</b> 27 Ararua Road, Waiotira Starting 21 <sup>st</sup> August 2025 <b>11AM-1PM</b>
<b>4th</b> <b>THURSDAY</b> <small>OF THE MONTH</small>	<b>WAIPU HERITAGE SCHOOL</b> 41 Halifax Drive, Waipu Starting 28 <sup>th</sup> August 2025 <b>* 12:30PM -2:30PM</b>

09 432 7197

[www.bbtrust.co.nz](http://www.bbtrust.co.nz)



## Summerset Mount Denby Spring High Tea Tours

Pop along to our Spring High Tea Tours on Wednesday 10 and 17 September

**Summerset Mount Denby in Whangarei** is a tropical garden retirement oasis with stunning views of the Western Hills. The village offers a relaxing, low-maintenance lifestyle in a vibrant and growing community. The village centre, opening early 2026, will feature a range of resort-style facilities including an indoor pool, café, and residents' bar.

Our serviced apartments, now selling off plans, are located in the village centre and offer the perfect balance of independent living with support on hand\* Pop in and tour our stunning new serviced apartment show homes.

Love the life you choose.

**Spring High Tea Tours**  
**Wednesday 10 & 17 September, 10am - 2pm**  
 Summerset Mount Denby, 7 Par Lane, Tikipunga  
 Call Wendy on 09 470 0282 or 021 246 5086

**Summerset**  
 RETIREMENT VILLAGES

\*Homes sold under licence to occupy, subject to availability. Summerset does not offer rental accommodation. Care subject to certification, availability and eligibility criteria. Images are indicative.

## For the love of basketball



Wendy with her whistle at Tuesday night basketball in the College gym

Basketball is growing in popularity with young people throughout New Zealand including in Bream Bay and is played in the Bream Bay College gym every Tuesday afternoon. Teams from four local primary schools: Waipu, Ruakākā, One Tree Point and Maungakaramea compete followed by three intermediate teams from Bream Bay College and one from Maungakaramea.

Wendy Rowsell, who oversees all this said, "I really



Rehua Martin, aged 10 years of Ruakākā School challenges 9 year old Levi Gibbs of One Tree Point School at a Tuesday night basketball game in the Bream Bay College gymnasium

### Bream Bay

# HAVE A GO SPORTS FESTIVAL

Get involved!

breambaysportstrust.co.nz

Sponsored by

September <span style="float: right; font-size: small;">(see over for more events)</span>		
WED	EVERY THURS	SAT
<p><b>Waipu Squash Club</b> <span style="float: right; font-weight: bold;">10</span></p> <p>Whether you're new to squash or keen to get back on court, this friendly evening for adults is the perfect chance to give it a go.</p> <p style="color: blue;">from 5.30pm</p> <p>Nikki Mrsich 027 663 6703 Waipu Rugby Squash Club, 9 St Marys Rd</p>	<p><b>Cirfit Health and Wellbeing</b> <span style="float: right; font-weight: bold;">11</span></p> <p>Stretch class suitable for everyone of all ages. Every Thursday in Sept, from the 11th, 18th, 25th.</p> <p style="color: blue;">8.30am – 9.15am</p> <p>Sandra Lucas 021 677 356 The SHRED Gym, 270 South Road, Waipu</p>	<p><b>Waipu Croquet Club</b> <span style="float: right; font-weight: bold;">13</span></p> <p>Come and try out a game of croquet with members available to support. Flat shoes required. Equipment provided. Ages 12 years old and up.</p> <p style="color: blue;">from 9.00am</p> <p>Kerry Godkin 021 170 7211 Waipu Croquet Clubroom, entry through Caledonian Park, off St Marys Road</p>
TUES	TUES	SUN
<p><b>Cove Walking Crew</b> <span style="float: right; font-weight: bold;">16</span></p> <p>Beach walk at Waipu Cove, followed by coffee and socialising at Cafe. Anyone (especially newcomers) looking for fresh air and friendship.</p> <p style="color: blue;">9.00am</p> <p>Lynette 021 170 7550 Waipu Cove Beach, opposite Cove Café</p>	<p><b>Hold Down Brazilian Jiu Jitsu and MMA</b> <span style="float: right; font-weight: bold;">16</span></p> <p>Great way to have fun while building confidence, coordination and fitness.</p> <p>Ages 4 - 7 <span style="color: blue;">3.30pm – 4.15pm</span> Ages 8 + <span style="color: blue;">4.15pm – 5.00pm</span> Ages 16 + <span style="color: blue;">5.30pm</span> (incl. adults)</p> <p>Rebecca Woodhead 0277799564 3 Princes Street, Ruakaka</p>	<p><b>One Tree Point Bowling Club</b> <span style="float: right; font-weight: bold;">21</span></p> <p>Coach new players to use bowls, followed by a few games. Gear is provided. Flat sole shoes to be worn. All welcome. 16 year olds and up.</p> <p style="color: blue;">1.00pm – 3.00pm</p> <p>Liz Tregidga 027 435 9421 35 Pyle Road West, One Tree Point</p>
SAT	MON	CONTACT FOR DETAILS
<p><b>Waipu Bowling Club</b> <span style="float: right; font-weight: bold;">27</span></p> <p>Introduction to bowls and games. Gear supplied. Flat soled shoes required. All non bowlers welcome. Ages from 16 to 85 year olds.</p> <p style="color: blue;">10.00am – 1.00pm</p> <p>Shelley Morison 021 115 0726 Waipu Bowling Club, 4A South Road</p>	<p><b>Bream Bay Tramping Group</b> <span style="float: right; font-weight: bold;">29</span></p> <p>Join us on a day tramp at Langsview track. Need to wear good walking shoes/boots. Bring daypack, rain jacket, lunch, snacks and water.</p> <p style="color: blue;">8.45am</p> <p>Glynis Smith 022 046 1994 DOC carpark, Cove Road, approx. 200m on right, south of Bream Tail Road</p>	<p><b>Te Kauika o Patuharakeke Waka Ama</b></p> <p>Rangatahi and Taitamariki who want to have a go at Waka Ama.</p> <p style="color: blue;">Date and time TBA (weather dependent)</p> <p>Hollie Kereopa, 021 082 66998 Ruakaka River, Princes Road</p>

Sponsored by



Supported by

One Tree Point Motel

Reyburn &amp; Bryant

Daltons

Bream Bay News

Waipu Liquor Centre



enjoy sharing my love of basketball with all the local kids, and seeing them improve each week. We have some excellent young talent in Bream Bay."

Wendy has played basketball most of her life. Her parents were involved in Northland Basketball way back in the 1970's and helped to build what is now McKay Stadium.

The family moved to Wellington in 1978 and Wendy grew up playing basketball there, representing Wellington in age grade teams.

She last played competitively in 2017 when she won a bronze medal at the World Masters Games with her old Wellington club Morehu. Her mum Gladys also played in the Over 60's division with some old

Whangārei teammates and also won a bronze medal!

The Bream Bay Tuesday night competition began in 2022, initiated by Josh Port from Northland Basketball. Wendy helped out as a volunteer referee and, when Josh had to move on last year, he asked Wendy to take over. She runs the games now with support from Josh and lots of parent help.

This week she is in Tauranga at the AIMS games with a Bream Bay College team.

She has plans next year to hold some skills sessions for primary school players and to form a Bream Bay College year 9 and 10 team to take part in either the Kaipara or Whangārei schools' competition.



The Bream Bay College Year 7 and 8 basketball team at the AIMS Games in Tauranga this week. Bream Bay College has also sent a netball team, two swimmers and a gymnast to the games, which is an annual sporting event for intermediate or middle school students

## Bream Bay HAVE A GO SPORTS FESTIVAL

Get involved!

[breambaysportstrust.co.nz](http://breambaysportstrust.co.nz)

Sponsored by

## October

WED	MON	EVERY THURS
<b>Waipu Senior Netball Club</b> Summer twilight mixed netball. 8 week competition. Every Wednesday starting October 1st. Males and Females aged 10 years old and up. <b>from 6.00pm</b> <b>Sunny Jones 021 231 3894</b> Celtic Barn, Waipu	<b>1 Athletics Bream Bay</b> Run, Jump and Throw! Give athletics a go! Ages 3-18 <b>4.00pm – 5.30pm</b> Ages 18+ <b>5.30pm – 6.30pm</b> <b>Jon Renes 021 606 746</b> Bream Bay College fields	<b>6 Cirfit Health and Wellbeing</b> Stretch class suitable for everyone of all ages. Every Thursday in Oct from the 9th 16th, 23rd, 30th. <b>8.30am – 9.15am</b> <b>Sandra Lucas 021 677 356</b> The SHRED Gym, 270 South Road, Waipu
SUN	SUN	SUN
<b>19 Waipu Cove Surf Lifesaving Club</b> Practice your CPR setting in a supportive setting. Try different water sports and see what it takes to be a Lifeguard. Family friendly. <b>11.00am</b> <b>Kath Manning 09 432 0564</b> Waipu Cove Surf Lifesaving Club	<b>19 Waipu Golf Club</b> Practice range will be available with mentors on site to provide advice and tips. Beginners and those new to golf welcome. <b>10.00am – 12.00 noon</b> <b>Vic Martick 09 432 0259</b> Waipu Golf Club, 3229 SH1, Waipu	<b>19 Bream Bay Ocean Swimmers</b> Swim in a group or small groups along the beach. Suitable for anyone with the confidence and ability to swim a reasonable distance. These events are both weather dependent. <b>9.00am</b> Jessica 022 090 4261 <b>or Marg 021 525 315</b> Waipu Cove Surf Club
SUN	SUN	NOV 1
<b>26 Waipu Fishing Club</b> Have a go fishing from the pontoon and areas around the clubhouse. Fishing focused art activity. Prizes, free sausage sizzle and drinks for children attending. <b>Time TBC (tide dependent)</b> <b>Linda Glibbery 027 666 6371</b> 100 Nova Scotia Drive, Waipu	<b>26 Ruakaka Surf Lifesaving Patrol</b> Meet the crew, land based activities and registration day. Junior Surf (5-13 year olds) Lifeguards (14+ year olds) <b>10.00am – 12.00 noon</b> <b>Charlie Davies 021 832 936</b> Ruakaka Surf Lifesaving Patrol, Ruakaka Beach Road	<b>Marsden Yacht and Boat Club</b> Open Day. Have a look around. Anyone interested in learning to sail is welcome. Family friendly. <b>10.00am – 2.00pm</b> <b>Grant Crombie 027 2262599</b> Marsden Yacht and Boat Club, One Tree Point Boat Ramp



Supported by

One Tree Point Motel

Reyburn &amp; Bryant

Daltons

Bream Bay News

Waipu Liquor Centre

# TRADES & SERVICE DIRECTORY

**0274 32 0070**

## DEAN MEYER SPRAYPAINTERS

Specialising in Motorcycle  
and Quad painting



Ph: 021 101 9213

**027 495 4548**

## BREAM BAY GLASS

FOR ALL YOUR GLASS NEEDS



## FAST WINDSCREEN REPLACEMENTS & CHIP REPAIRS

- Mobile service or come to our workshop
- Ultra competitive pricing • Insurance claims welcome.
- Windscreen replacement in under an hour.

**Phone Conrad on 022 036 2916**  
2/17 Gumdigger place.



• POND CLEANING • DRIVEWAYS • RACEWAYS  
• LAND CLEARING • TREE REMOVAL • ROADING AND MORE

**CALL ME TODAY FOR ALL YOUR EARTH & TREE WORKS**  
**PHONE ROY 027 374 5090 WAIPU**

## ABSOLUTE CONCRETE

[www.absoluteconcrete.co.nz](http://www.absoluteconcrete.co.nz)  
CULVERT PIPES

Spun and reinforced

Crane truck delivery  
Drainage Merchant - Hardware Store  
Email: [sales@absoluteconcrete.co.nz](mailto:sales@absoluteconcrete.co.nz)  
Phone (09) 431 2211  
KAIWAKA



WE BUILD, HIRE, ALLOY MOBILES, TEMPORARY  
FENCING, & SHRINKWRAP

Ph: 09 432 7643 • 0274 726 772  
[macsway@xtra.co.nz](mailto:macsway@xtra.co.nz) Kepa Road, Ruakaka

## O'MALLEY CONTRACTING LTD | CONCRETE SPECIALISTS

- FOUNDATIONS
- HOUSE SLABS | STAIRS
- RETAINING WALLS
- DRIVEWAYS | CARPARKS
- EXPOSED AGGREGATE
- COLOURED CONCRETE
- COMMERCIAL | RESIDENTIAL
- LICENCED BUILDING PRACTITIONER

Free No Obligation  
Quote



FAMILY OWNED & OPERATED

021 2200 198 | [OMALLEYCONTRACTING.COM](http://OMALLEYCONTRACTING.COM)

## Bream Bay Concrete Ltd.

Free Quotes • Reliable Service • Quality workmanship

- Concrete pads
- Shed floors
- Pathways
- Home floors
- Driveways
- Concrete cutting
- Excavation works
- Retaining walls
- Paving fences
- Profiles for homes & sheds
- Subfloors & boxing

**Mark Royals Ph: 432 0107 Mob: 0274 433 130**



Wiring Safe Homes And Businesses  
Throughout Northland

RESIDENTIAL COMMERCIAL INDUSTRIAL



0800 223 555 027 35 33 555  
[www.breambayelectrical.co.nz](http://www.breambayelectrical.co.nz)



## MARSDEN POINT HIGH TIDES

	AM		PM	
Thu 4 Sept	3.55	2.2	4.47	2.3
Fri 5 Sept	4.55	2.2	5.39	2.4
Sat 6 Sept	5.52	2.3	6.28	2.5
Sun 7 Sept	6.45	2.4	7.14	2.6
Mon 8 Sept	7.34	2.6	7.59	2.7
Tue 9 Sept	8.22	2.7	8.44	2.8
Wed 10 Sept	9.09	2.7	9.30	2.8
Thu 11 Sept	9.57	2.8	10.17	2.8
Fri 12 Sept	10.46	2.7	11.06	2.7
Sat 13 Sept	11.37	2.5	11.57	2.6
Sun 14 Sept	~	~	12.31	2.6
Mon 15 Sept	12.53	2.5	1.31	2.5
Tue 16 Sept	1.53	2.4	2.36	2.4
Wed 17 Sept	2.58	2.3	3.42	2.4
Thu 18 Sept	4.06	2.3	4.46	2.4
Fri 19 Sept	5.10	2.3	5.42	2.5
Sat 20 Sept	6.08	2.4	6.33	2.5
Sun 21 Sept	6.59	2.4	7.18	2.6
Mon 22 Sept	7.45	2.5	8.00	2.6
Tue 23 Sept	8.27	2.5	8.39	2.6
Wed 24 Sept	9.06	2.5	9.15	2.5
Thur 25 Sept	9.43	2.5	9.51	2.5
Fri 26 Sept	10.20	2.5	10.27	2.4



Stainless and  
Aluminium Welding  
and Bespoke  
Fabrication



Gates and outdoor furniture. Marine repairs and fabrication.  
Onsite welding for farm repairs and modifications.  
[www.tcengineering.nz](http://www.tcengineering.nz) 021 145 7075 or 021 203 0309

## Ruakaka Motors

Mechanical and Auto Electrical  
Repairs and Servicing



Monday - Friday 7.30am - 5pm

Tyres and Batteries  
WOF testing Gold Card discount

Drop off, pick up service available in Waipu

**Phone 432 7233**

## Tractor Mulching

100hp tractor with high bodied yffails,  
mulcher, park finishing mowers, slashing  
Gorse & blackberry spraying

Also mechanical tractor  
repairs

Phone Bain McGregor  
0274 979 013  
or 09 432 0527



## PARADISE QUARRY

### PARADISE QUARRY STONEMASONS

Specialists in stunning stone for landscape  
Suppliers & installers of northland's own schist for all your  
stonemasonry & landscaping Requirements

(09) 432 2722 or GEOFF (021) 972 139  
[www.paradisequarry.com](http://www.paradisequarry.com)

## BLIND PRO

Blinds • Awnings • Shutters

Indoor blinds and outdoor screens

Call us today for a free, no obligation  
consultation and quote

ph 09 423 9661

website [www.blindpro.co.nz](http://www.blindpro.co.nz)

email [info@blindpro.co.nz](mailto:info@blindpro.co.nz)

## McQUINN PUMPS

How's Business?  
... It's Pumping!

24/7 SALES, SERVICE & INSTALLATION | PUMPS & WATER TREATMENT  
PHONE SUPPORT AVAILABLE

0800 627 846  
PHONE FREE

**NOW AT 72 KIOREROA ROAD**  
—ALONG FROM RD1 & ITM

**Deadline for next issue - Wednesday 17 September**



# TRADES & SERVICE DIRECTORY

**0274 32 0070**


## DRAINAGE:

\* Septic Systems \* Water Tanks \* Truck & Digger Hire \*  
\* Subdivisions \* Domestic \* Commercial \*  
Certifying Drainlayers

Licensed Contractor for  
Waste & Drainage Work



## EARTHWORKS:

\* Subdivisions \*  
\* Farm Work: Effluent Pond Design & Build, Dams, Races \*  
\* House Sites \* Driveway Prep \* Lawns \* Roading \*

P. 09 432-7877 M. 027-432-7877

E. karl@hansende.co.nz



**SMALL BLOCK MULCHING**

Phone COLIN (Joe) 0274916983



**INTEGRATED**  
ELECTRICAL • SOLAR • HEATPUMPS

Bream Bay's one stop shop for residential and commercial solar energy systems, heat pumps, new build projects, security systems and maintenance

**Phone 09 430 0280**



integratedes.co.nz

## PLASTAWORKZ

**INTERIOR PLASTERING**  
Specialising in renovation,  
alterations, small jobs & repair work

GLEN

021 223 2003

plastaworkzwhangarei@gmail.com

www.facebook.com/plastaworkz

## LAWSON CARTAGE

FOR ALL YOUR  
EARTHWORKS & CARTAGE NEEDS

**Suppliers of: topsoil, compost, woodchip,  
bark, sand, pebble, rocks and firewood.**

**Ph/Fax 09 432 8418 or 021 768 940**

458 Marsden Point Rd. PO Box 142, Ruakaka 0151  
email: lawsoncartage@xtra.co.nz

## GREG STEWART Qualified Builder...License # 106626



Over 45 years experience  
Prompt Service

**Ph 021 317 555**

Email gpstewart56@gmail.com

SMALL ALTERATIONS..  
DECKING..FENCING  
BUILDING REPAIRS..HANDYMAN

**NO JOB TOO SMALL GIVE ME A CALL**

## Floorcraft.

Residential & Commercial

CARPET, CARPET TILES, VINYL & VINYL PLANKS

**Clive Adams**  
Owner/Operator

hello@floorcraft.nz  
021 221 5244

49 Port Road  
Whangarei 0110

09 438 0527  
www.floorcraft.nz

## LOW COST DRIVEWAYS & SURFACING NEEDS

**Concrete or asphalt beyond your budget ...**

We have the next best solution for a  
fraction of the price.

Call for a quote, you'll be pleased you did!  
Paradise Quarry Contractors

**Geoff (021) 972 139 or (09) 432 2722**

For contractors who 'think' ...



www.themaintenance.co.nz

House washing (chemical and non chemical),  
window cleaning, interior and exterior  
painting, staining and oiling,  
guttering cleaning, pest control, tree trimming

FOR A FREE QUOTE

Ph. Tony 021 196 2949 or Melisa 021 075 6770



**Top 3%**

OF THE RAY WHITE GROUP  
INTERNATIONALLY

JAMES ALEXANDER  
021 878 178

Licensed Salesperson The Real Estate Shop Limited Licensed (REAA 2008)



- Plumbing New & Repairs
- Water Tanks & Pumps
- Gas fitting
- Drainage
- Roofing & Spouting
- Woodfire Installations

**0800 326 123**



**BARFOOT  
& THOMPSON**

I Love Selling Bream Bay!

**Angelique Hartnett**

Coastal & Lifestyle Sales / AREINZ  
0274 356 411 / 09 435 5914 P  
a.hartnett@barfoot.co.nz E

## GRAEME BINT FENCING

GOOD RATES, NO JOB TOO SMALL

**09 432-1599 or  
027-292-2833**

— gribint@xtra.co.nz —

## MANGAWHAI SMALL ENGINES

Grasshopper, Husqvarna and Honda dealer



194 Molesworth Drive, Mangawhai  
Ph: 09 431 5270 or Mb: 021 655 481  
Email: msengines@xtra.co.nz

## Grant McLean Stock Agent for Bream Bay

Ph 021 7758 48  
Email: skincarla@xtra.co.nz

All aspects of stock sales including:  
• dairy beef • bobby calves • store cattle • live export heifers  
• sheep • pigs • supplying stock for slaughter

Also caters for small block holders.

**Carrfields**

Livestock



**STORAGE  
BREAM BAY**

76 Waiwarawara Dr, Ruakaka 0171

**Karen Loft**  
Business Manager  
Mob: 021 432 701

Office Hours 9.00 - 1.00  
email: storagebreambay@gmail.com  
www.storagebreambay.co.nz



Call me today for a  
free no obligation appraisal

**Angie van Zyl**

021 212 6093 / 09 432 7505  
a.vanzyl@barfoot.co.nz

BARFOOT & THOMPSON

**BREAM BAY NEWS PHONE 027432 0070**

Email: breambaynews@xtra.co.nz

Post copy to : Bream Bay News, RD 2, Waipu

Email: breambaynews@xtra.co.nz

or leave it at the Waipu or Ruakaka Post and Lotto Shops

## GRAZING

GRAZING AVAILABLE 15 acres in Waipu. Stables and yards. Ph. 432 0732.

## FOR SALE

HAY Conventional bales. Baleage rounds. All top quality. Ph. 027 432 0351

**WILTSHIRE SHEEP**  
Ideal lifestyle block sheep  
Self Shedding  
Ph 027 432 1016

**WORMS  
FOR SALE**  
For worm farms  
Phone or text  
027 432 0070

**RAWLEIGH'S  
PRODUCTS**  
Independent dealer.  
Ointments  
back in stock.  
Phone Susan McRae  
027 227 2291.

**Treated framing timber**  
Various sizes  
Surplus prices  
Scooters Plywood Ph no. 09 438 6565

## FOR HIRE

**SHIPPING CONTAINERS**  
20ft Shipping Containers, hire offsite \$180 per month + GST + Del, minimum 3 months,  
Ph 0212722739 / 021432701

## MARKETS

### O.T.P ARTISAN MARKET

Fundraiser for Whangarei Hospital  
Children's Ward

Third Sunday every month  
97 One Tree Point Road

Spaces Available Phone 021 530 153

**Local people read  
THE BREAM BAY NEWS**  
It is an effective place to advertise

## SOCIAL SERVICES

### Safeman Safe family Men's Centre

Safeman Safe family offers a safe place for men to talk privately without judgement and with complete confidentiality. We are peer led and professionally supported and offer a range of services and support for men and their families.

The services we provide are as follows:

- Advocacy Navigator
- Court support
- FGC Support
- Probation Community Service Provider
- Legal Advice
- Marriage Celebrant
- House and property blessing
- One to one counselling
- Drug and Alcohol support
- Anger management group sessions
- Supervisor for court ordered access
- Work brokers/ help with employment opportunities.

No appointments are necessary, we have an open door police - if you need help or know someone that does just come on down to: **9 Takutai Place, Ruakākā**. We are right next door to Jimmy's Barber Shop or I can be reached by phone 021 121 0763 - Phil Paiea

### BREAMBAY COMMUNITY SUPPORT TRUST

Takutai Place, Ruakaka Phone: 09 432 7197



Services we provide:

- Registered Social Workers
- Family Support Workers
- Youth Workers
- Youth Holiday Programme
- Counsellors
- Community Connectors (Connecting community to various services)
- Free Whanau Ora Medical Clinic with Ki A Ora Ngatiwai. Fortnightly Wednesday mornings 10am-12noon, by appointment only phone 09 435 4586
- Free Budgeting Service -fortnightly on Thursdays 10am-1pm, by appointment
- Mana Wahine Ki Wahine Toa & Ha Tane groups
- Community Gardens behind our main building please help yourself
- Pataka Kai/ Food Pantry located outside our reception door.

Follow us on social media - Facebook and Instagram for updates on what is happening here during the week.

www.bbtrust.org.nz

## WANTED

**OLD NEWSPAPER** Copies of the Bream Bay News, Advocate, Herald, Leader, Weekend Lifestyler, or Mangawhai Focus for recycling as erosion control. Waipu Lions fundraiser. Phone Dave Bell 09 432 0861.

### THE NEXT PUBLICATION DATE

of the Bream Bay News will be Thursday 25 September  
The deadline for all copy is 4pm on  
Wednesday 17 September

## SOCIAL SERVICES



### Not sure? Ask us!

We provide free, confidential and independent information and advice to help you understand your rights and responsibilities.

Contact us for assistance.  
09 438 8046 • whangarei@cab.org.nz

www.cab.org.nz



LINKING HANDS  
Health Shuttle

Phone  
(09) 431 8969

### BREAM BAY ANGLICAN FOODBANK

If you would like assistance or know someone that does, perhaps we can help  
Please phone Liz  
022 582 5734?

## SERVICES OFFERED

### NORTH LAND HEADSTONES

Located in One Tree Point  
Your Local Headstone Showroom  
Call 0800 707 800  
www.northlandheadstones.co.nz

**Cut it! Chip it! Grind it!**

**Tree Removal**

- ✓ Pruning
- ✓ Chipping
- ✓ Stump grinding

Qualified & Insured  
Ph Scott (0800) 468-9663  
**Arborcare Tree Maintenance**

**GLENMOHR water care**

**WATER TANK CLEANING**

No need to empty your tank

- Vacuum or full scrub

Phone Mark Draper  
0274 707 607

## JD LAWN CARE SERVICES

Lawn mowing, Weed spraying, Water blasting, surface cleaning of driveways, paths and patios, Hedge trimming, Section clearing, tree pruning, wood chipping and more.

**PH. 021 063 7907**

## CLASSIFIED ADVERTISING

Costs \$5.50 for up to 20 words and 20c for each additional word.

Boxed, classified adverts cost \$16.50 gst .inc.

Phone your advert through to 027452 0070

email it to breambaynews@xtra.co.nz

Post it to: Bream Bay News, RD 2 Waipu 0582 or leave it with payment at: The Waipu Post Shop or the Ruakākā Gift and Lotto Shop



## EMPLOYMENT

## ALDEN RANBURN -

## Recruiting now!

We currently have the following vacancies within our aged care facility –

Caregivers - casual/part time.

Kitchen hand / Cleaners - casual/part time

Conveniently located within Waipu village we offer full training to successful candidates.

If you are kind, compassionate, reliable, take pride in your work, and can work rostered shifts please apply by sending your CV to: manager.ranburn@alden.co.nz

## KW SINGERS PRACTISE



At Ranburn

Care Home.

Tuesdays

1.15 - 2.45.

An unauditioned community choir

Anne Connolly - Munt  
0274847576

## PUBLIC NOTICES

## WAIPU MOUNTAIN BIKE CLUB AGM

20 September 2025 at 3pm

Venue - The Waipu Boat Club

All Welcome



ANNUAL GENERAL MEETING  
will be held in the Senior Citizens' Hall,  
Fagan Place, Mangawhai Heads,  
on Sunday 14 September, 2025 at 2pm.

Presentation of the annual reports and election  
of the committee,  
will be followed by:

Guest speaker, Surenya Hilton, will share her  
observations of Fairy Tern activities in the Kai-  
para Harbour

All welcome  
Enquiries to: info@fairytern.org.nz

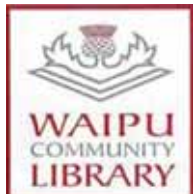
## LIBRARY HOURS



RUAKAKA COMMUNITY LIBRARY

Takutai Place, Ruakaka  
432 8406  
Mon - Fri 9:30am-3:30pm  
Sat 9am-1pm

JP Service available  
Saturdays 10am - 11am.



Monday, Wednesday,  
Thursday, Friday &  
Saturday 10am - 1pm.  
Tuesday 10am - 4pm.  
Phone 432 0375

## PUBLIC NOTICES



**Bream Bay Medical Centre Ltd.**

**Ruakākā Town Centre, Ruakākā**

**Monday - Friday: 8.45 am - 5pm**

**Saturdays: 9am - 12pm**

**Marsden Cove Medical Centre**  
**1A Ngawaka Lane, One Tree Point**

**Monday - Friday: 8.45am - 5pm**

Please advise at time of booking  
if you require an extended consultation



**We will be closed from 3pm on Thursday 25th September  
for staff training.**

**New patients welcome**

**Ph: 432 8060**

Local people  
read  
THE BREAM BAY NEWS  
It is an  
effective  
place to  
advertise



**WANT TO KNOW MORE ABOUT YOUR  
COMPUTER, TABLET, SMART PHONE,  
DIGITAL CAMERA?**

Training designed for those over 50!

Come to our Open Day

Discuss your needs with our tutors  
so you can keep up with technology

When: Tuesday 16th September 2025  
10am – 12noon

Where: 7 Kapa Road, Ruakaka  
SENIORNET BREAM BAY  
Phone enquires: - 09 4327 692  
(Please leave a message)

## JUDICES OF THE PEACE

## Justices of the Peace



## Ruakākā

Paea Paki 021 149 1625  
Darrell Trigg 09 432 7256/021 332 901  
Ken Orr 09 432 8215  
Wayne Buckland 022 644 5376.

## One Tree Point

Jules Flight 0274 777 210  
Sir John Goulter 021 612 442  
MM Jolley 027 415 9486  
Ian Bogue 0274 300 418  
Grant Brown 027 248 7126  
Sharon Carroll 0272653227

## Waipu

Trevor Vaile 021335 075  
Doug Scott 027 229 9752  
Ken Couper 027 292 0524  
Angela Stolwerk 021 823 966  
Chris Martin 027 367 2947  
Mary Abercrombie 021 598467

Make contact with a Justice of the Peace  
(on any day) and make an appointment to have  
your documents completed.  
A service desk also operates 10am to 11am on  
Saturdays in the Ruakākā Library.

## BREEM BAY SUNDAY CHURCH SERVICES

**Presbyterian** Camellia Ave, Ruakaka:  
8.45am. The Centre, Waipu: 10.15am.  
Prayer Service: 7pm


**Encounter** 223 Marsden Pt. Rd,  
Ruakaka, 10am.

**Anglican** - ST PAUL's Church, 25 Kar-  
awai St, Ruakaka 1st and 3rd Sundays  
9.30am  
ST. PETER'S CHURCH, 8 Nova Sco-  
tia Dr., Waipu 2nd and 4th Sundays,  
09.30am

**Catholic** Holy Family Church,  
Ruakaka, 10.30am. Mass or Liturgy of  
the Word

**Lifepoint.** 300 OTP Rd, 10am.

**Frazerhurst®** 40 years in Whangārei  
Curtains | Blinds | Awnings | Screens



Come and talk to us about your window furnishing requirements

- Free measure and quotes
- Free loan sample service
- Whangārei Showroom • Satisfaction guaranteed

**Weathermaster**  
Blinds | Awnings | Shutters | Umbrellas

146 Lower Dent St.  
Whangārei  
Ph: 09 438 3986  
www.frazerhurst.co.nz

**Harcourts Waipu**

**2 Harmony Way, Waipu** WAI2843  
\$525,000 (RV)

- Completely flat, 2001m2 section
- 900m walk from Waipu township
- So close to town with a rural feel
- Lovely country view of pasture & rolling hills
- Power and fibre on-site
- Post and rail fencing
- Quality sub-division, build that dream home!

Roger King 0277 555 001

**Lot 16, Waipu Caves Estate Drive, Waipu** WAI2769  
\$550,000

- 3.4020 hectares – expansive block of land
- Nestled in a quiet gated sub-division
- Rustic, tiny cabin already on-site
- Security, serenity and peace
- Calming rural setting
- Walk to the Waipu Caves scenic reserve
- 12kms from Waipu village

Lyndie Mullins 021 101 6389

**12 Norts Way, Waipu** WAI2844  
\$535,000 (RV)

- Completely flat, 2169m2 section
- Quiet section, away from the main road
- Located 1km from Waipu village
- Lovely country view of pasture & rolling hills
- Power and fibre on-site
- Post and rail fencing
- Quality sub-division, perfect blank canvas!

Roger King 0277 555 001

Harcourts Waipu | 7 The Centre, Waipu | 09 432 4000  
Waipu Real Estate Ltd - Licensed Agent REAA 2008

**Harcourts Waipu**

**BBR BREAM BAY REALTY**

**BREAM BAY REALTY LIMITED (LICENSED: REAA 2008)**

Shop 11 | Town Centre | Ruakaka 0116 | NZ  
PH: 09 433-0300 | bbrealty.co.nz  
info@bbrealty.co.nz

Proud sponsors  
**SPCA**  
WHANGAREI



**OPEN HOME SUNDAY 11.00—11.30AM**  
21 CAMELLIA AVENUE, RUAKAKA

**CALLING ALL NEW HOMEOWNERS DREAMING OF COASTAL LIVING!**  
This immaculate and cosy gem is within walking distance to the Ruakaka surf beach. Fresh looking and light, this 1960's home has been superbly maintained by the owner. Upgrades include kitchen, bathroom, double-glazed windows and heat pump.  
**Set Date Sale 4/9/25 | bbrealty.co.nz #4256**  
**FRANCIE STOKES**  
**Mob: 022 656 0165**



**FEEL CONNECTED—RUAKAKA LIFESTYLE**  
Escape to the tranquillity of rural living, with this exceptional 1ha lifestyle property. A charming 3-bedroom, 2-bathroom home with 2 living areas & a fire located in the centre of the home ensures warm cosy living. Extra large double garage plus a near new 12m x 9m 3-bay shed. Whether you're looking for a sustainable lifestyle, or simply a rural retreat, this property is a rare find.  
**Price \$1,150,000 | bbrealty.co.nz #4237**  
**FIONA SOUTHOERN MNZM**  
**Mob: 021 317 775**



**UNPACK & RELAX @ ONE TREE POINT**  
Perfect for downsizing or first home buyers. Featuring open plan lounge and kitchen area, three spacious bedrooms, a bathroom and a separate laundry. A sun-filled porch and a large rear deck for summer entertaining, which completes this private gem. Single garage with off-street parking and mostly fenced section.  
**Price \$749,000 | bbrealty.co.nz #4255**  
**FIONA SOUTHOERN MNZM**  
**Mob: 021 317 775**

**OPEN HOME SUNDAY 12.00—12.30PM**  
11 BERMUDA PLACE, ONE TREE POINT



**Best Offer Over \$699,000**

**OPEN HOME SUNDAY 1.00—1.30PM**  
12 SEAVIEW ROAD, RUAKAKA

**VENDOR ON THE MOVE!**  
Located in a quiet cul-de-sac, just minutes from the beach and with sea views, this solid, light filled home with 3 spacious bedrooms, is ideal for families, or those seeking a holiday retreat. Set on a peaceful section surrounded by established gardens, the outdoor space is perfect for relaxing.  
**bbrealty.co.nz #4219**  
**JOANNE DEWSON AREINZ**  
**Mob: 021 780 622**



**A HARBOUR, A MOUNTAIN AND A PLATFORM TO VIEW THEM FROM**  
Elevated, decked, a conservatory, solid block and brick with aluminium joinery. Upstairs—main living areas, separate kitchen, two bedrooms and a bathroom. Downstairs—two bedrooms, bathroom, rumpus room, workshop and double garaging. Options, space and room to move.  
**Price \$849,000 | bbrealty.co.nz #4249**  
**JANINE GOLDSMITH AREINZ**  
**Mob: 021 432 793**



**THE KEY TO EASY LIVING**  
Beautifully presented three-bedroom home that's move-in ready and designed for effortless living. The generous kitchen offers ample storage and flows into sun-soaked living areas that open seamlessly to a paved outdoor entertaining space. Enjoy the La Pointe Beach Estate resident-only amenities with boat ramps, local cafes, shops, and schools nearby.  
**Price \$965,000 | bbrealty.co.nz #4253**  
**KIM BROWN**  
**Mob: 027 545 1208**

**OPEN HOME SUNDAY 11.00—11.45AM**  
26 KEY WEST DRIVE, ONE TREE POINT